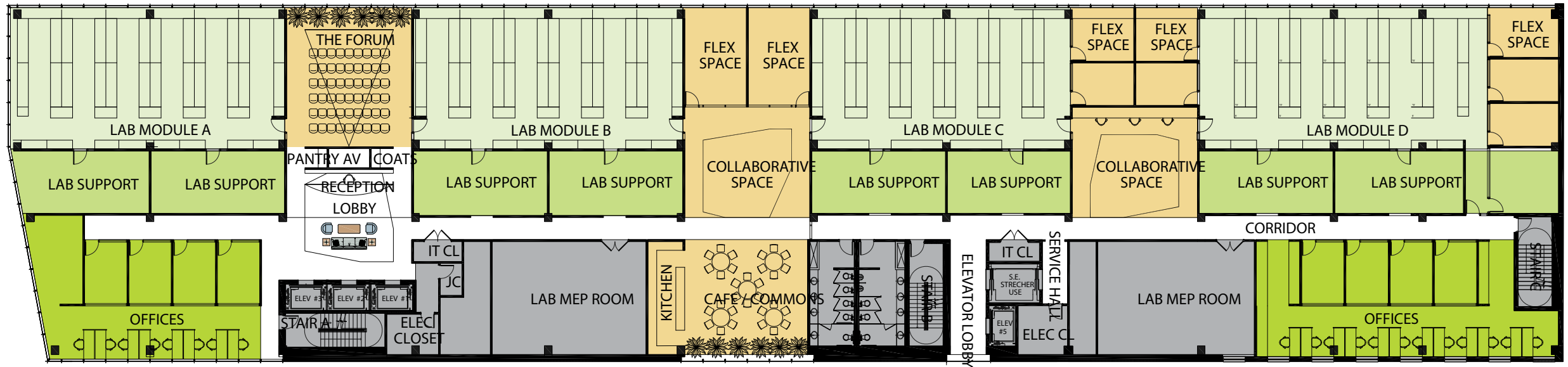


FLEXIBLE LIFE SCIENCE MODULES LAYOUT

FLOORS 2-5: ~36,000 RSF

WEST 126TH STREET

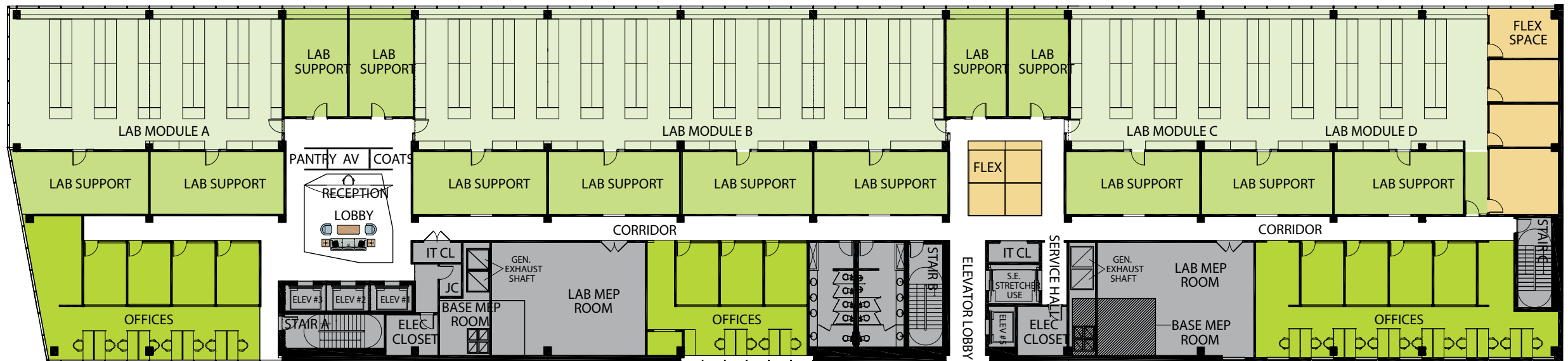


HIGH DENSITY LIFE SCIENCE LAYOUT

FLOORS 2-5: ~36,000 RSF

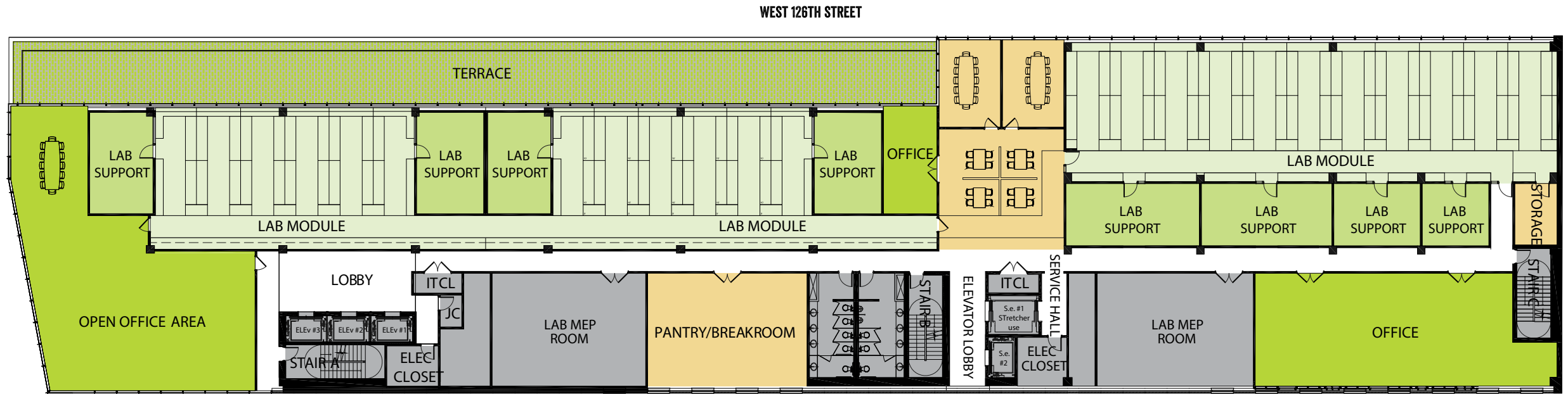
© 2012 HOK

WEST 126TH STREET



FLEXIBLE LIFE SCIENCE MODULES LAYOUT

FLOOR 6: ~32,000 RSF

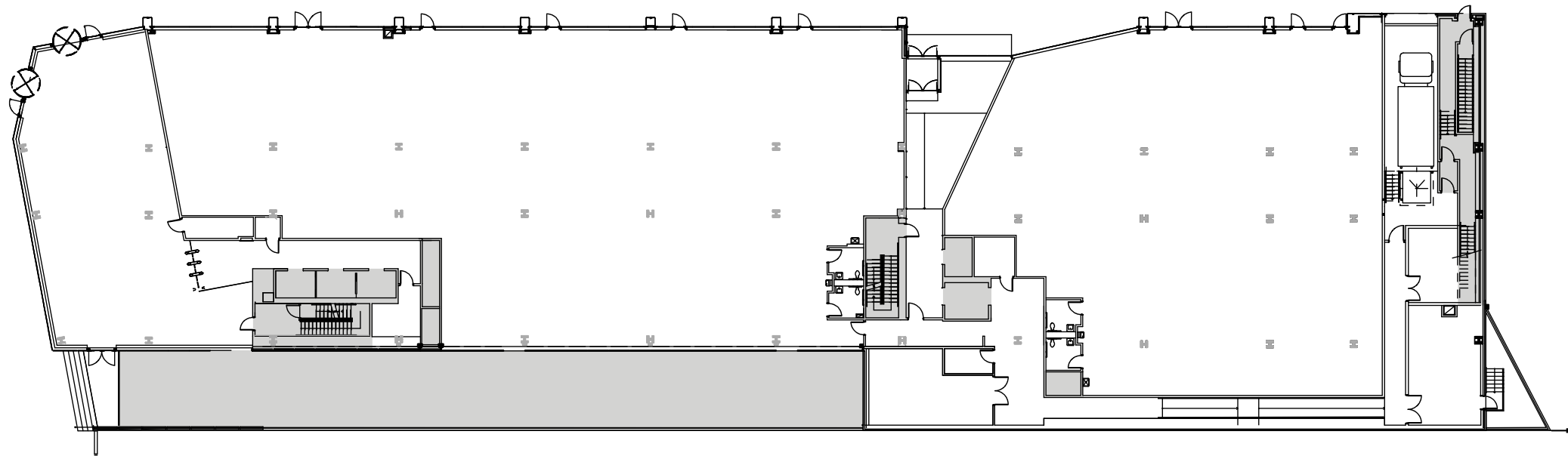


TAYSTEE CORE PLANS

GROUND FLOOR: POTENTIAL FOR SEPARATE ENTRANCES

© 2014 TAYSTEE ARCHITECTS

WEST 126TH STREET



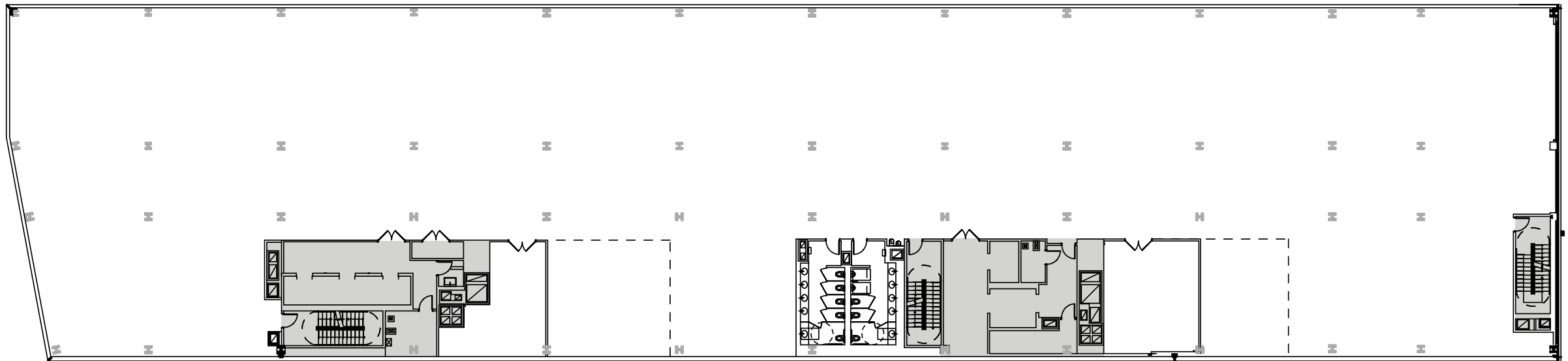
N

TAYSTEE CORE PLANS

FLOORS 2-5: ~36,000 RSF

© 2014 TAYSTEE GROUP, INC.

WEST 126TH STREET



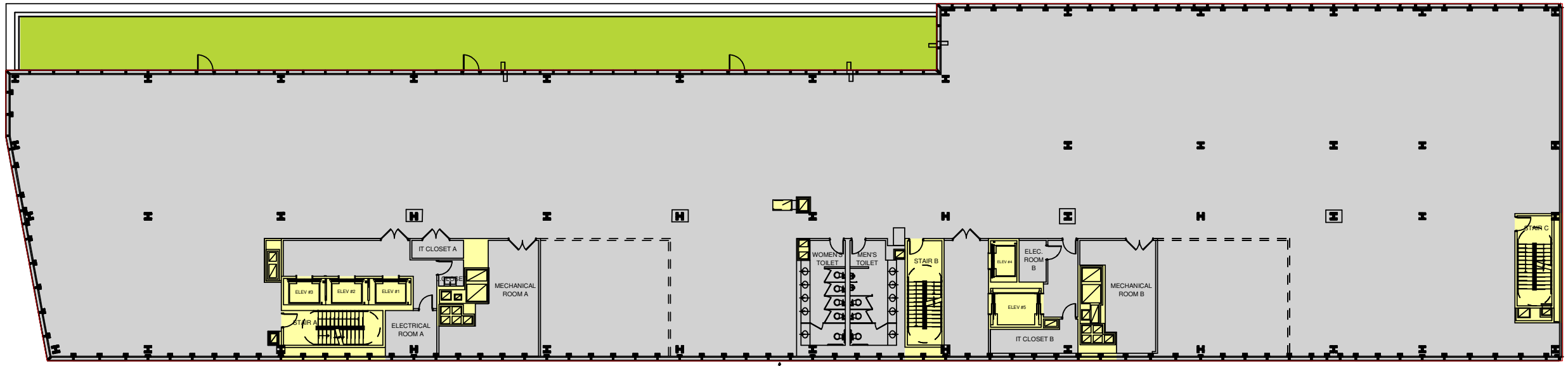
N

TAYSTEE CORE PLANS

FLOORS 6: ~32,000 RSF

© 2014 TAYSTEE GROUP, INC.

WEST 126TH STREET

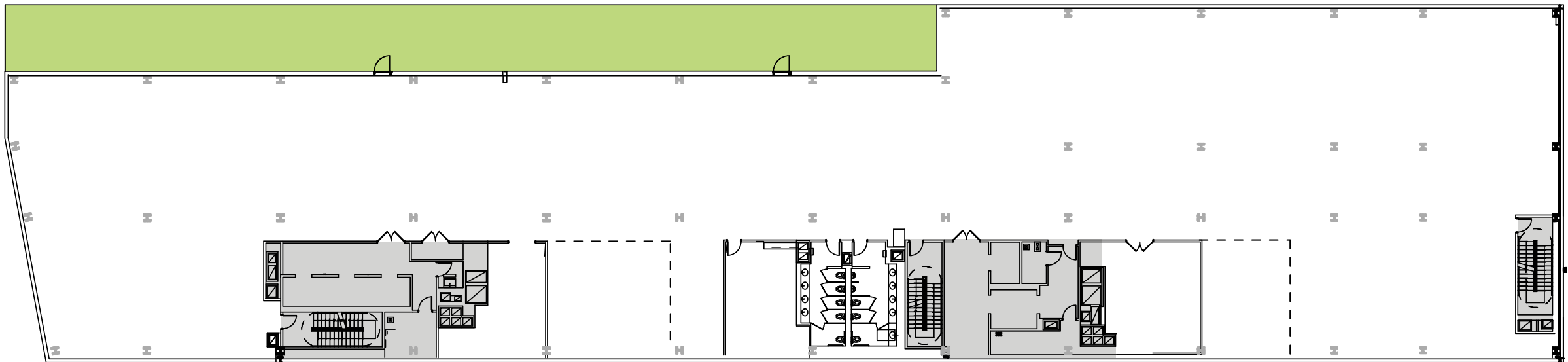


TAYSTEE CORE PLANS

FLOORS 6: ~32,000 RSF

© 2014 TAYSTEE GROUP, INC.

WEST 126TH STREET



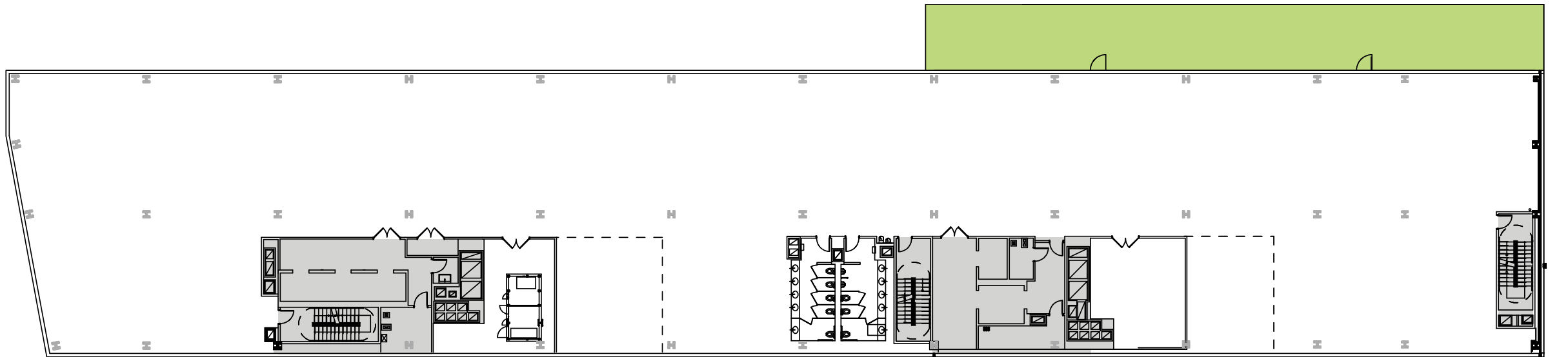
N

TAYSTEE CORE PLANS

FLOOR 8: ~29,000 RSF

© 2014 TAYSTEE ARCHITECTS

WEST 126TH STREET



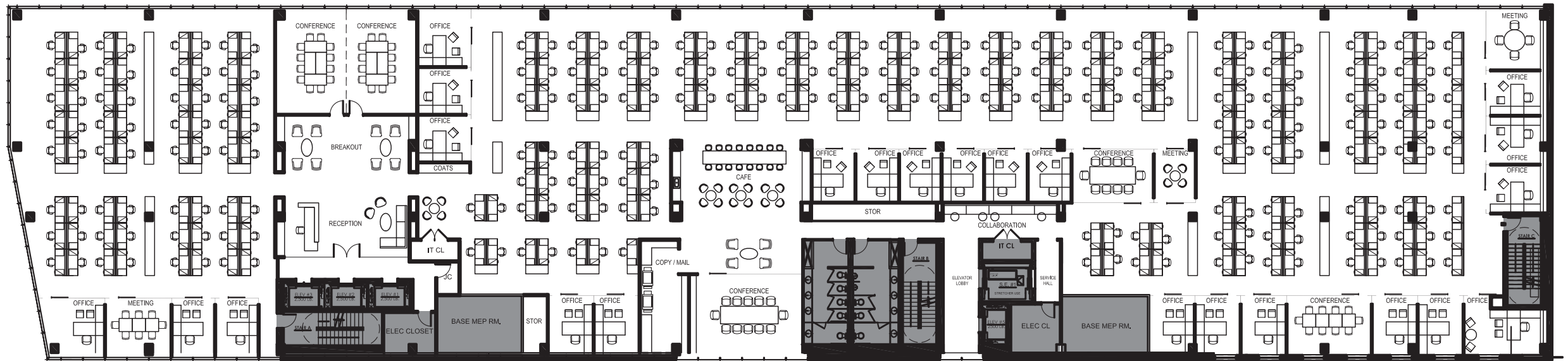
TAYSTEE OFFICE TEST FITS

FLOORS 2-5: ~36,000 RSF

© 2014 TAYSTEE GROUP, INC.

Space	Qty.
Workstation	244
Office	23
Reception	1
Meeting Room	3
Conference Room	5
Collaboration Area	1
Breakout Area	2
Cafe / Collab. Zone	1
Copy / Print / Mail	1
Total	281

WEST 126TH STREET



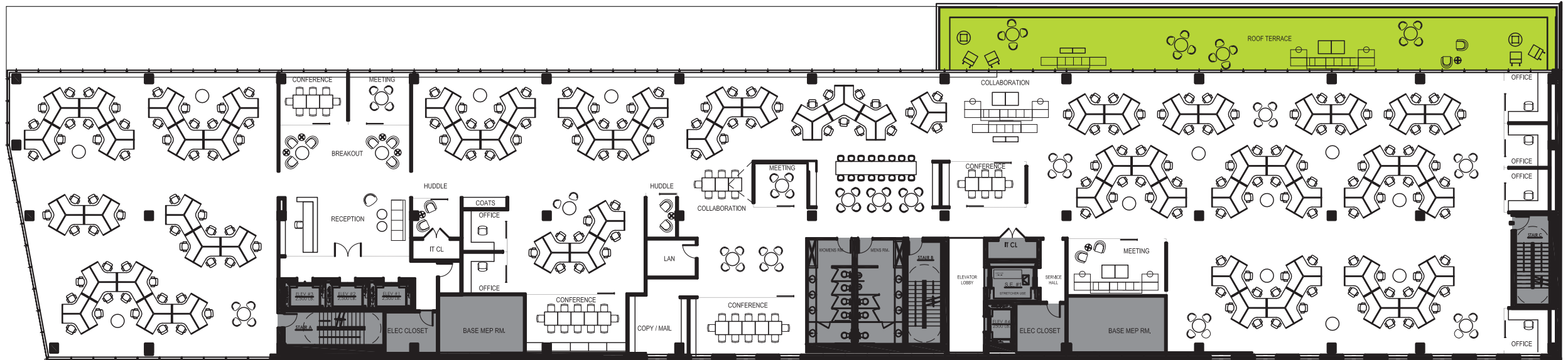
TAYSTEE OFFICE TEST FITS

FLOOR 8: ~29,000 RSF

© 2014 TAYSTEE GROUP

Space	Qty.
Workstation	192
Office	6
Reception	1
Meeting Room	3
Conference Room	4
Collaboration Area	1
Breakout Area	3
Cafe / Collab. Zone	1
Copy / Print / Mail	1
Mail	1
Total	213

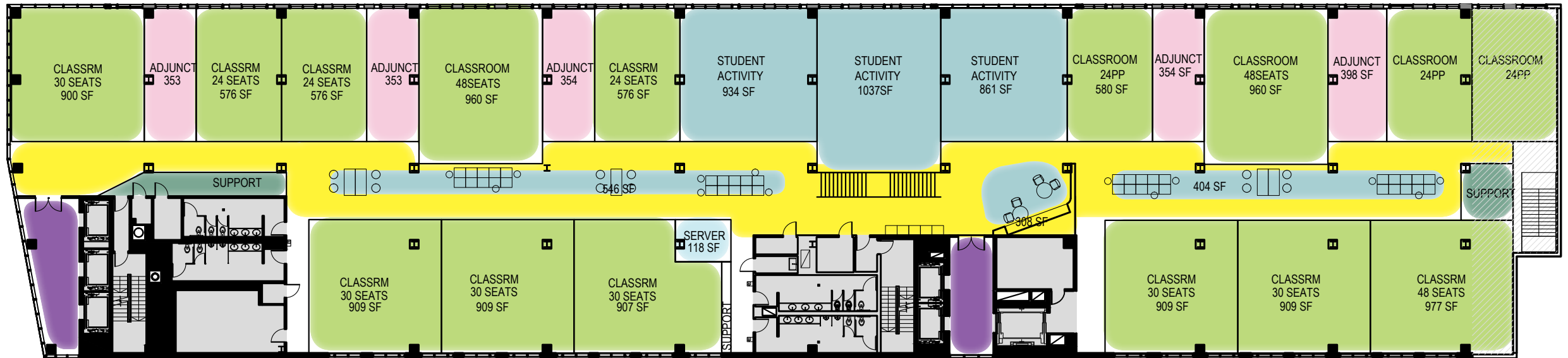
WEST 126TH STREET



TAYSTEE SCHOOL TEST FITS

FLOORS 2-5: ~36,000 RSF

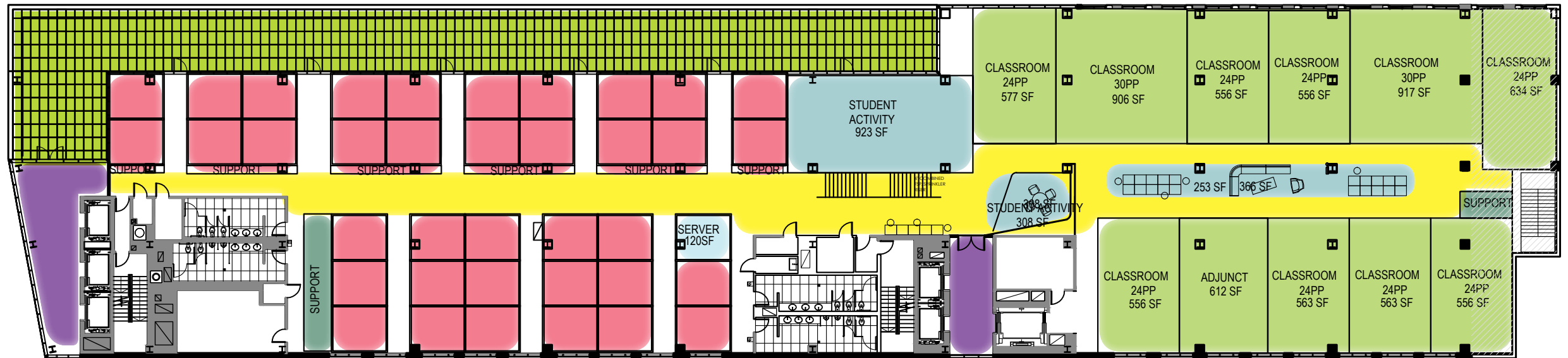
WEST 126TH STREET



TAYSTEE SCHOOL TEST FITS

FLOORS 6: ~32,000 RSF

WEST 126TH STREET

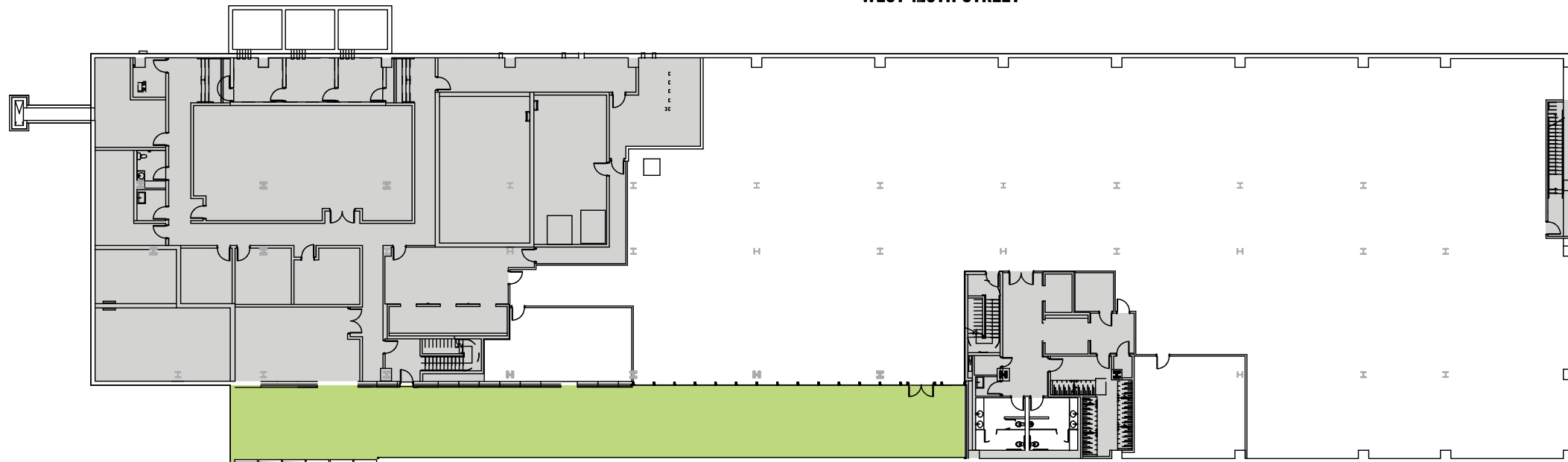


THE TAYSTEE LAB BUILDING

450 WEST 126TH STREET, NEW YORK, NY

CELLAR PLAN

WEST 126TH STREET



STEVE PURPURA
617 439 9315
steve.purpura@cbre.com

JONATHAN SCHIFRIN
212 984 6629
jonathan.schifrin@cbre.com

DAVID STOCKEL
212 984 6606
david.stockel@cbre.com

MARY ANN TIGHE
212 984 8128
maryann.tighe@cbre.com

EVAN HASKELL
212 984 8049
evan.haskell@cbre.com

GREGG ROTHKIN
212 984 8192
gregg.rothkin@cbre.com

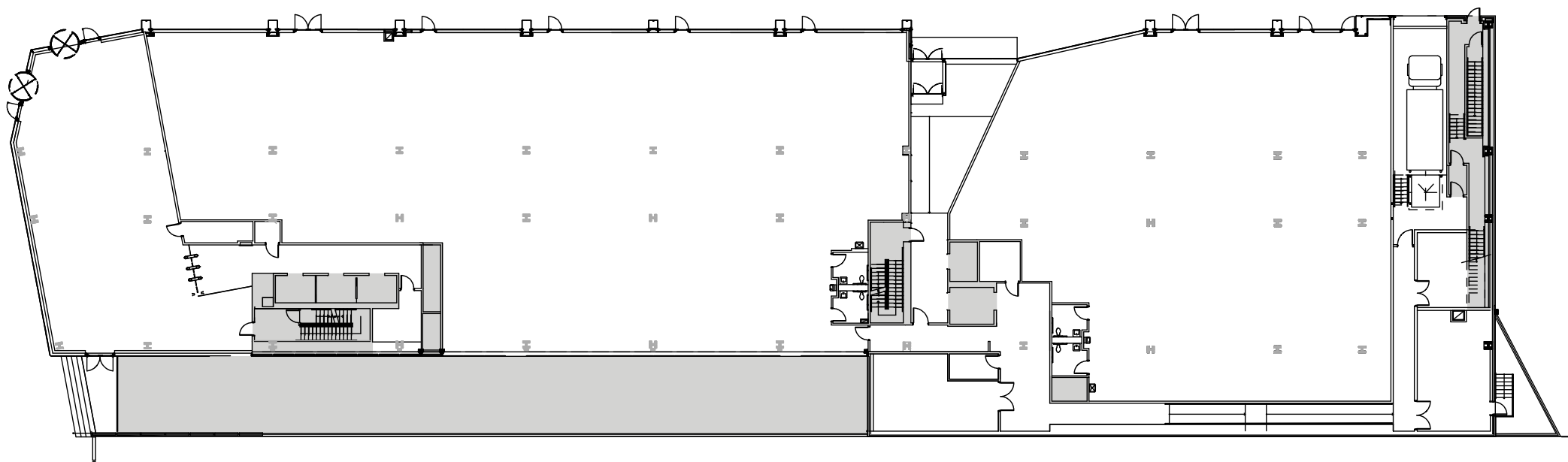
CAROLINE MERCK
212 984 8336
caroline.merck@cbre.com

THE TAYSTEE LAB BUILDING

450 WEST 126TH STREET, NEW YORK, NY

1ST FLOOR PLAN

WEST 126TH STREET



STEVE PURPURA
617 439 9315
steve.purpura@cbre.com

JONATHAN SCHIFRIN
212 984 6629
jonathan.schifrin@cbre.com

DAVID STOCKEL
212 984 6606
david.stockel@cbre.com

MARY ANN TIGHE
212 984 8128
maryann.tighe@cbre.com

EVAN HASKELL
212 984 8049
evan.haskell@cbre.com

GREGG ROTHKIN
212 984 8192
gregg.rothkin@cbre.com

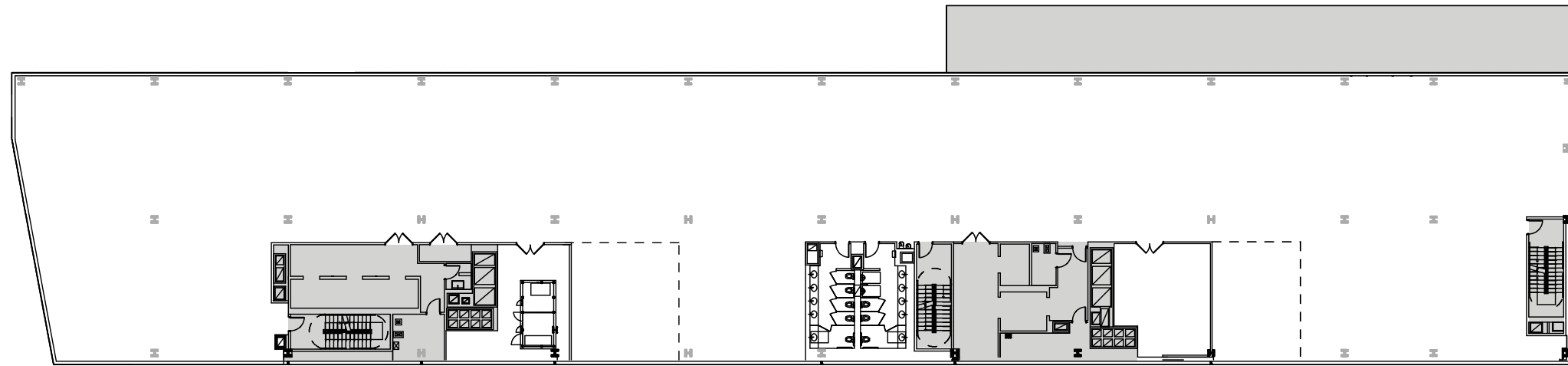
CAROLINE MERCK
212 984 8336
caroline.merck@cbre.com

THE TAYSTEE LAB BUILDING

450 WEST 126TH STREET, NEW YORK, NY

9TH FLOOR PLAN

WEST 126TH STREET



STEVE PURPURA
617 439 9315
steve.purpura@cbre.com

JONATHAN SCHIFRIN
212 984 6629
jonathan.schifrin@cbre.com

DAVID STOCKEL
212 984 6606
david.stockel@cbre.com

MARY ANN TIGHE
212 984 8128
maryann.tighe@cbre.com

EVAN HASKELL
212 984 8049
evan.haskell@cbre.com

GREGG ROTHKIN
212 984 8192
gregg.rothkin@cbre.com

CAROLINE MERCK
212 984 8336
caroline.merck@cbre.com